



Agriculture

Agriculture

We work in partnership with our agribusiness clients and have a strong reputation for understanding our client's business operations and developing them into a functional operating project.

Our practical experience and understanding of diverse farming practices, operations and management means we can integrate these functional requirements to deliver complex engineering projects and feasible agricultural operations.



Feasibility and Planning

- planning constraints
- economics and policy
- environmental strategy
- cost planning
- funding regimes
- farm management practices



Understanding Agribusiness and Farming

- logistics
- animal husbandry
- bio security
- processing facilities and machinery
- resource management



Creating and Maintaining Sustainability

- Energy Management**
solar utilisation, biodigestion, renewables
- Water Management**
harvesting, treatment, transfer, efficiency
- Waste Management**
collection, treatment, repurposing, disposal



Asset Management and Project Execution

- managing delivery to a plan
- project management frameworks
- procurement and supply chain models
- contract management



Regional Factors

- soils
- climates
- construction efficiencies
- remote sites

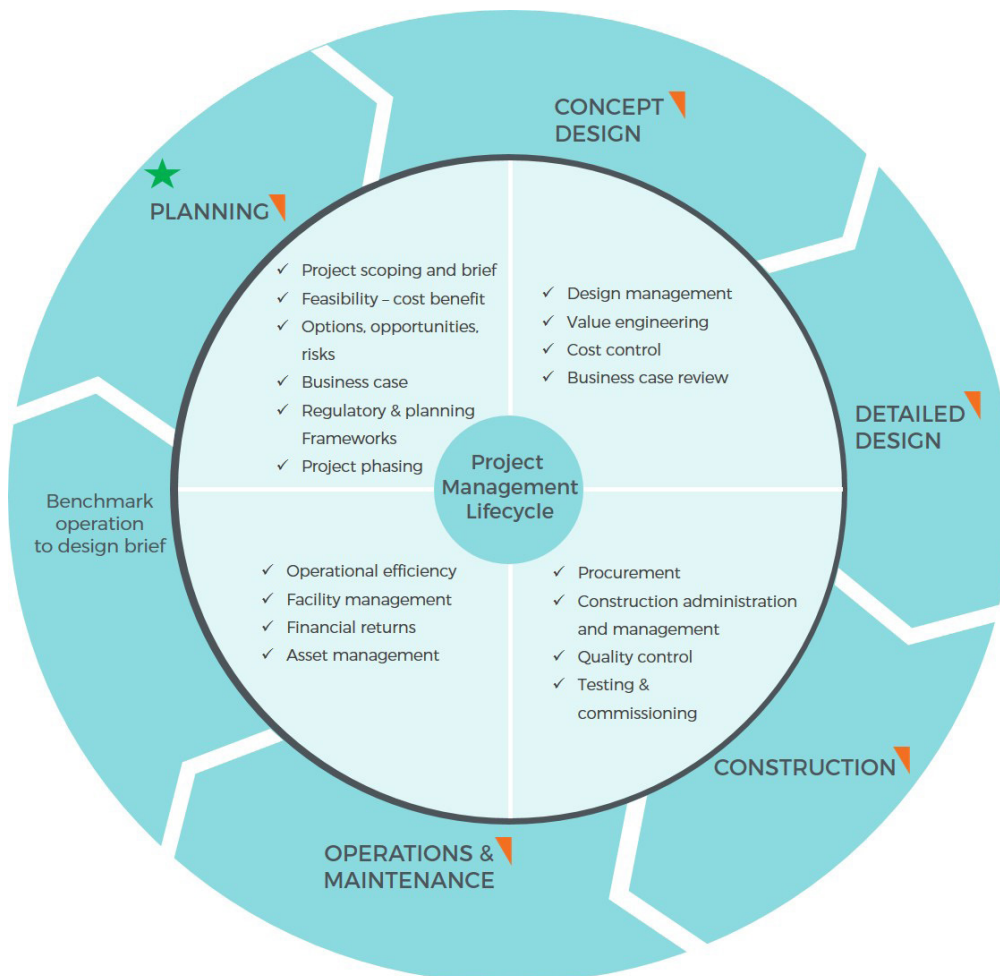
Concept to Completion Project Delivery

Combining our specific industry experience with our traditional capabilities and expertise we have worked with our agribusiness clients to deliver

- Beef and sheep feedlot solutions
- Poultry farm and egg production solutions
- Pig farming solutions
- Processing and manufacturing facilities
- Grain storage and handling solutions
- Farm master planning design and project management
- Irrigation and water resource solutions

Effectively integrating multi-disciplinary services to deliver agribusiness projects on time and on budget is essential for successful project delivery.

Our team of specialists implement and deliver solutions from concept to completion based on our client's project requirements and their key business drivers, whilst considering the broader context of farming practices and external impacts.





Cotton Seed Distributors, Wee Waa

Cotton Seed Distributors are the sole suppliers of cotton seed throughout Australia. They have recently completed a \$91 million redevelopment of their cotton seed processing plant and laboratory based in Wee Waa, NSW.

RMA's structural team designed a bespoke solution to fit the client's specific operational requirements, including a delinting facility and laboratory. This included design solutions that accommodated their machinery and functional process, whilst considering the expansive clays found in the Wee Waa area.

RMA's stormwater and civil teams designed a unique and tailored solution to provide flood immunity for the site's flat topography. The team undertook extensive modelling and analysis for a bespoke design solution that included a levee bank that surrounded the entire site.

\$91M

construction value for this
redevelopment

Bespoke

design to fit the environmental
and operational needs of the
client



Grading and Packing Facility, Pittsworth

McLean Farms pride themselves on supplying premium quality eggs across Australia. The grading process is necessary to ensure certain sizes of blemish free eggs are packed for sale in supermarkets and stalls.

RMA designed the original grading floor for McLean Farms and recently designed the expansion of the facility. RMA provided full principal consultant services, managing all aspects of this project from concept through to construction services.

This turn key solution included concept and detailed design, design management, tendering and contract administration and construction services.

RMA have undertaken further work on the site to help our client meet consumer demand. The facility expansion has increased processing by 800,000 eggs per day.

\$24M

project value

RMA provided providing full turn key solution and delivery

2 Million

eggs processed per day



Poultry Rearing Sheds, Elbow Valley

RMA was engaged by Carr Farms to provide value engineering and redesign of a design provided by a third party.

The bulk earthworks design by RMA consisted of 200,000 cubic metres cut and 187,000 cubic metres of fill with 12m high batters. The redesign by RMA saved up to 50,000 cubic metres of earthworks, translating to approximately \$170,000 in savings.

In addition to improving on the original design, the design team needed to adhere to strict court orders to ensure the viability of the Carr Farm expansion.

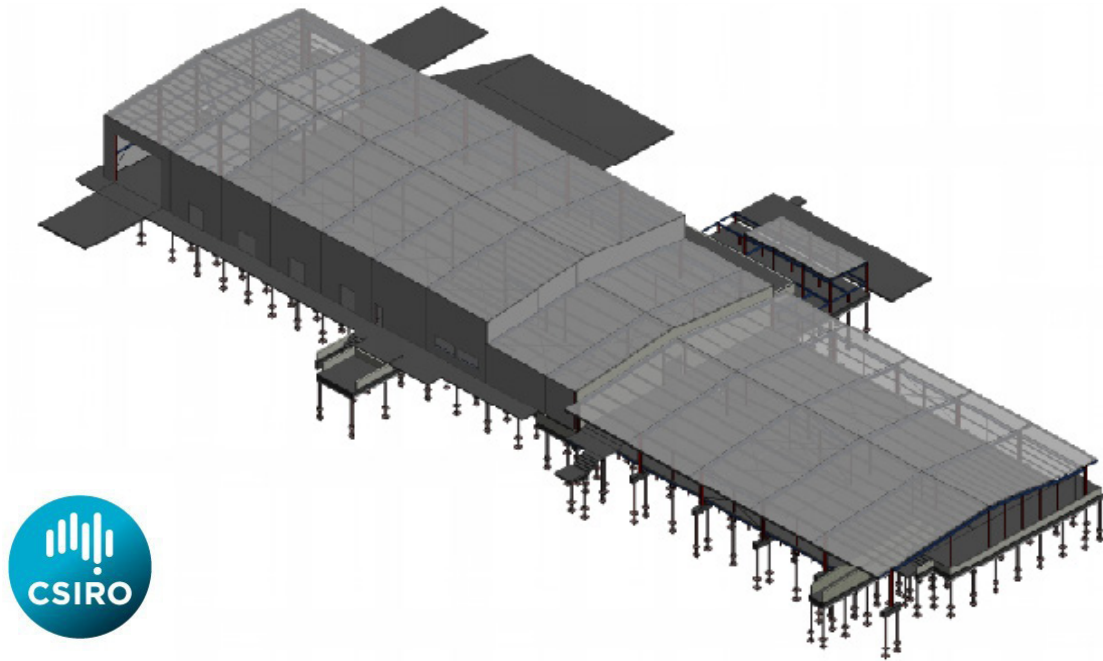
RMA and Carr Farms now have an ongoing relationship with further bulk earthworks designs for additional pads having been completed and the next pad is currently underway. The entire site will consist of 10 pads in total with each pad approximately 81,000 m² in size.

\$170K

in savings by redesign
provided by RMA

over 50,000

cubic metres of earthworks
saved



CSIRO New Cotton Breeding Research Facilities, Myall Vale

The CSIRO is the sole cotton breeder in Australia. Their current site at Myall Vale required expansion to include a new Cotton Processing Facility and Laboratory Facility for CSIRO Agriculture and Food site staff.

RMA was engaged to provide the design development, detailed design and tender documentation, plus for construction documentation for the new cotton facility and laboratory.

The site sits on extremely reactive clays and the design solution required particular attention to detail for service trenches, as well as the structure to ensure long term performance.

The Civil engineering design component needed consideration for a site that is subjected to significant flooding.

\$17.9M

project value



Poultry Farm Expansion, Darling Downs

Darwalla Group is one of Queensland's largest privately owned poultry producers, supplying much of the Queensland Market.

Darwalla's success in the industry has necessitated the expansion of their facilities across their sites throughout the Darling Downs.

The Group's expansion includes 6 new, 120-metre long poultry sheds.

Our works have included the bulk earthworks and stormwater design to tie the new sheds in with the existing facilities, geotechnical investigations for foundation design, construction supervision and certification as well as tendering and contract administration.

Each shed has required between 2000 to 10,000 cubic metres of earthworks to create a flat pad for the construction of the sheds.

Integrated
multidisciplinary
engineering solutions